

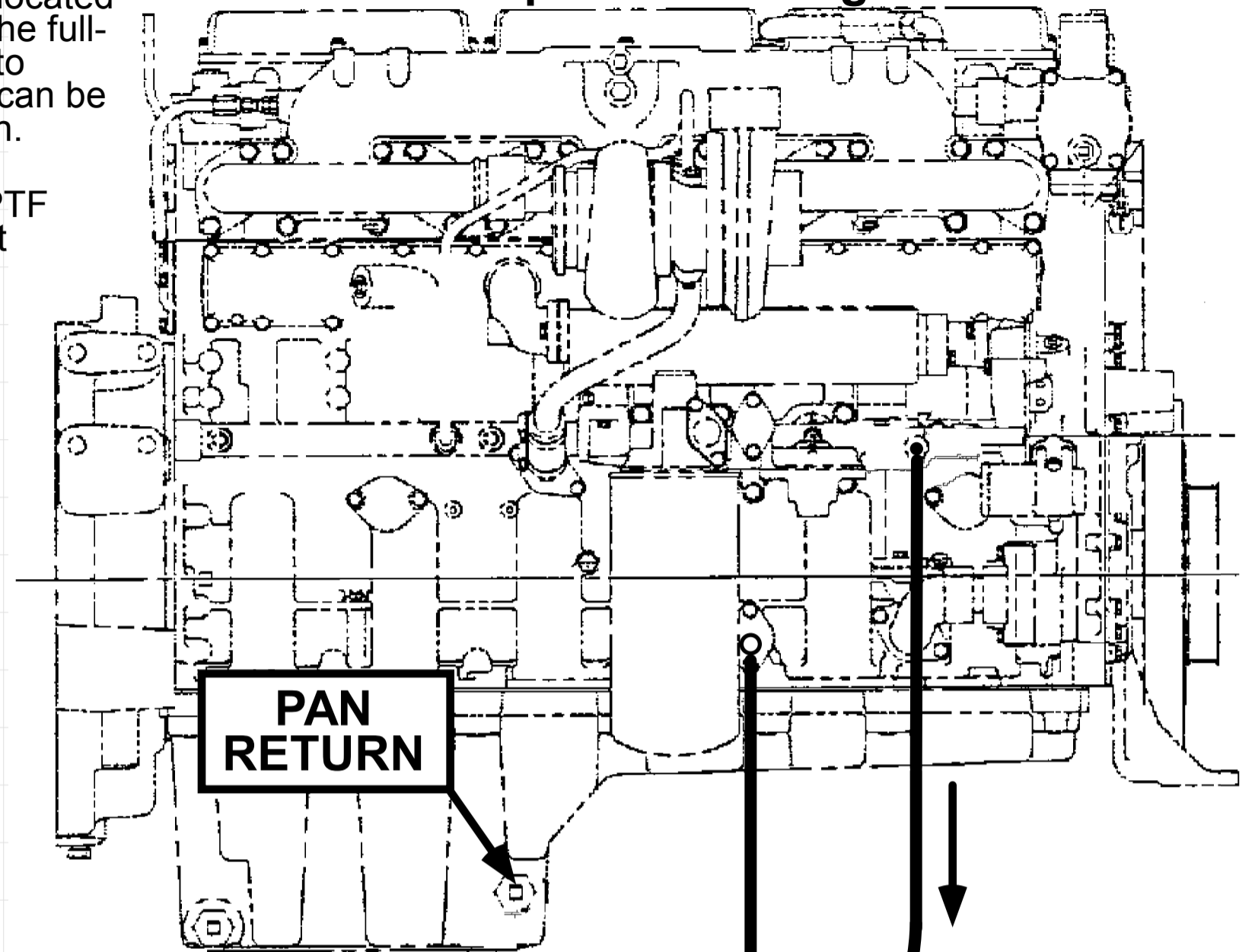
Current production Caterpillar 3176 diesel engines are produced with spin-on full-flow filters, and can be factory-equipped with bypass filters. If a bypass filter has been installed, it must be removed from the engine prior to installation of the Spinner II Centrifuge, and ports other than those identified in this bulletin must be plugged.

The Cat 3176 truck engine has a convenient fitting for lube oil supply of the Spinner II centrifuge located on the front upper right side of the filter base, directly above the lube oil pump riser tube. This SAE "O"-ring plug (9/16"-18, with 11/16" hex head) should be removed and replaced by a flare to straight thread adapter fitting (may use AeroQuip 202702-6-8S).

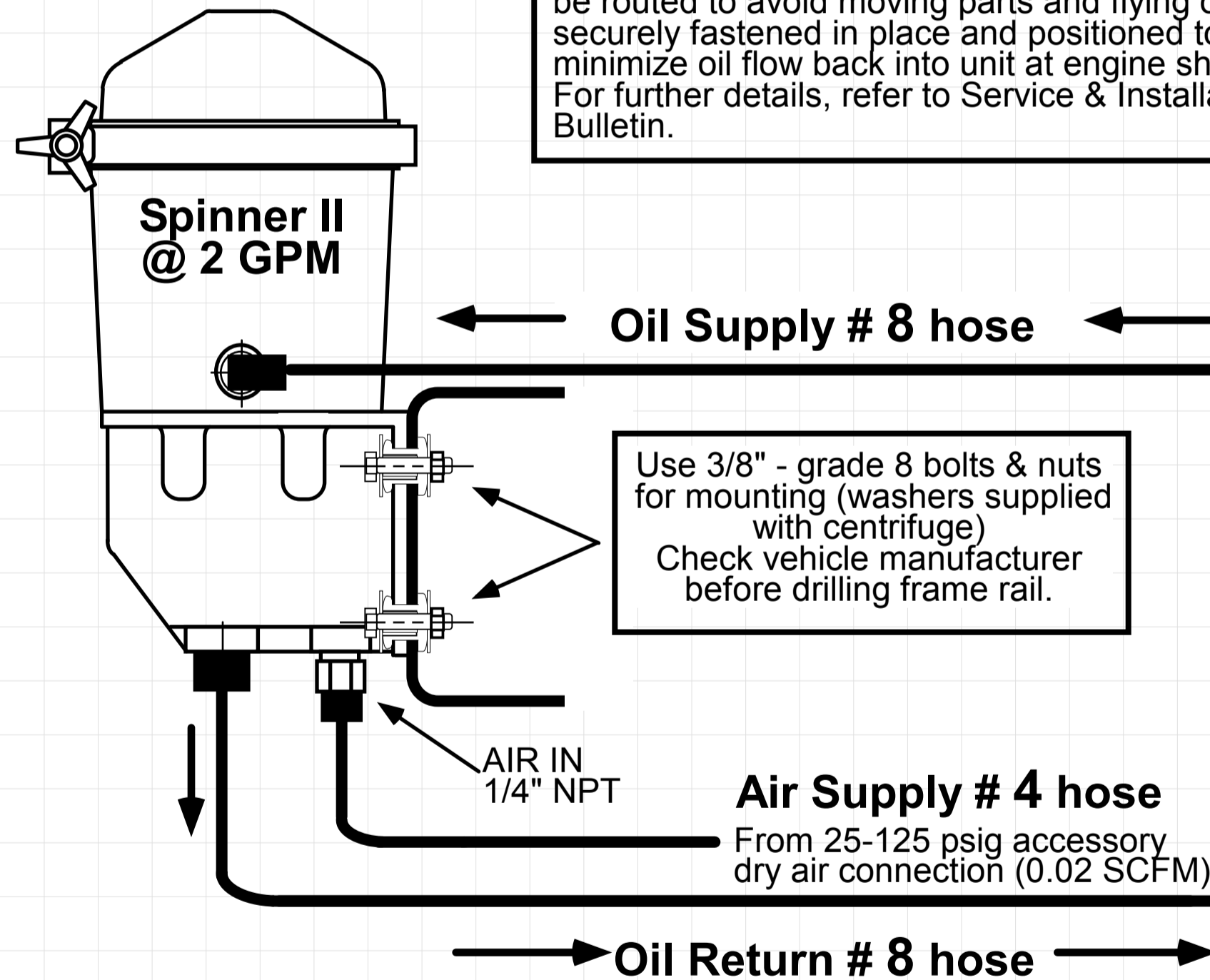
The best return point on the engine is located just behind and slightly to the front of the full-flow filter. This two-bolt flange is used to drain the factory-fitted centrifuge, and can be modified for Spinner II centrifuge return.

An alternative return is a 1" -11 1/2 NPTF fitting positioned near the bottom front portion of the pan.

Caterpillar 3176 Engine



The Spinner II unit should be securely mounted to the frame rail or other firm support. Hoses should be routed to avoid moving parts and flying objects, securely fastened in place and positioned to minimize oil flow back into unit at engine shutdown. For further details, refer to Service & Installation Bulletin.



Use 3/8" - grade 8 bolts & nuts for mounting (washers supplied with centrifuge)
Check vehicle manufacturer before drilling frame rail.

To the best of our knowledge, this information is accurate and will provide safe and efficient operation of both the Spinner II centrifuge and the engine. Engines and options are subject to change. If you experience any problems with installation or operation, please contact your Spinner II Distributor or call our customer service department, at the following phone number: 800-231-7746.

INSTALLATION BULLETIN

SPINNER II

© Spinner II Products / T. F. Hudgins, Incorporated
Houston, Texas 77292-0946

drawn SAR checked approved

3	13 Aug 96	Update to Supply Description (info verified and updated 7/02)	TXB
rev	date	change	by

Spinner II Centrifuge SE Installation on Caterpillar 3176 Engine

project date © 6 July 1989 dwg **A1-4125-3**