

Alco 12 & 16 cylinder 251F diesel engines are typically equipped with canister style full-flow filters, but are not factory-equipped with bypass filters. If a bypass filter has been installed, it must be removed from the engine prior to installation of the Spinner II Centrifuge, and ports other than those identified in this bulletin must be plugged.

Lube oil supply for the Spinner II unit is made available by:

Option 1 - connect to port on the pipe between the lube oil pump and pressure relief valve; if this option is employed, ensure that oil pressure at Spinner II inlet does *not* exceed 110 psi

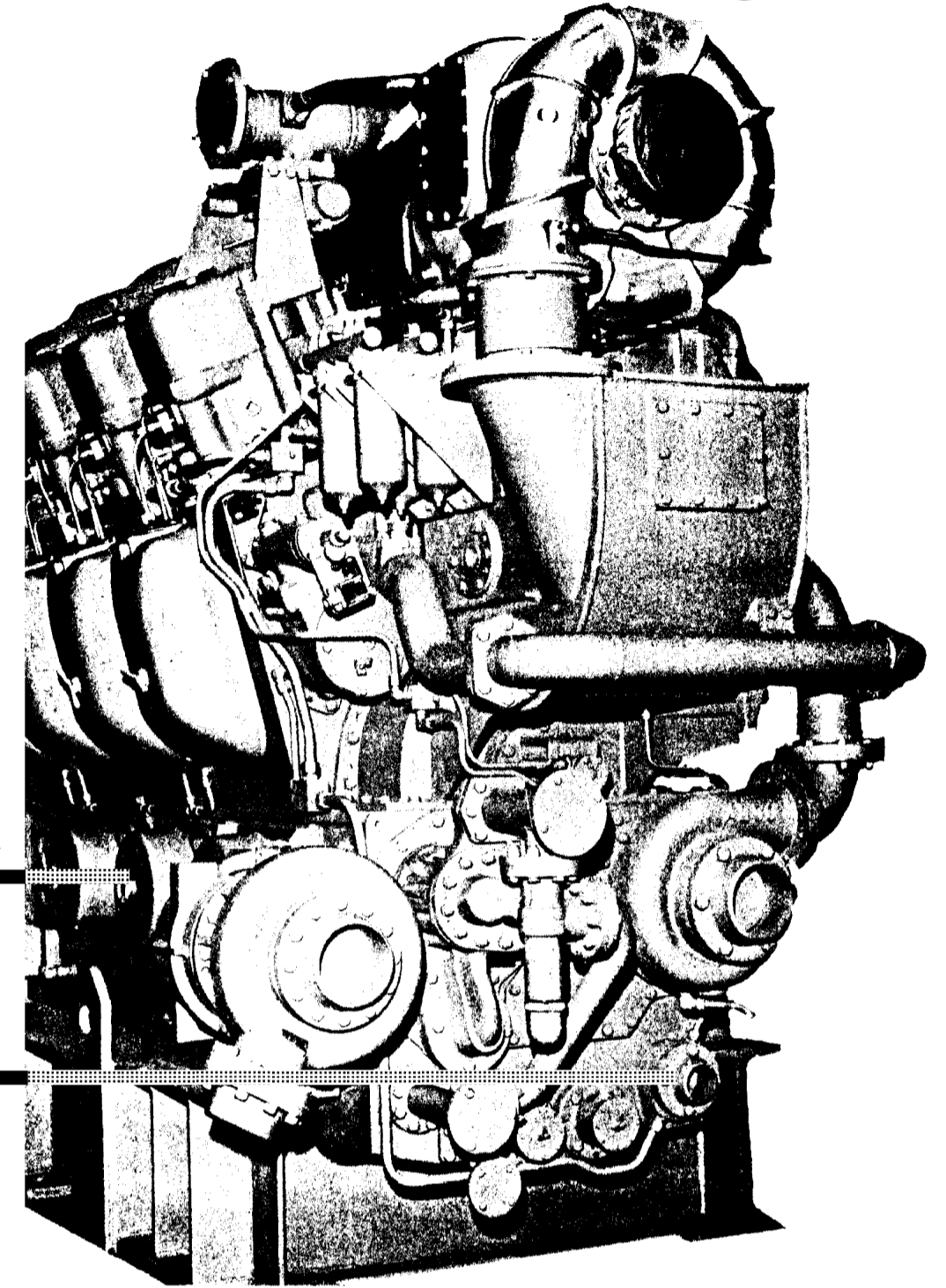
Options 2&3 - connect to port up or downstream of lube oil strainer (approximately 90 psi)

Lube oil return from the Spinner II unit should be routed to a "T" fabricated into the oil fill tube, or into a fitting brazed on a crankcase access cover.

Photograph shown is representative of this Alco engine; component position may vary, but lube oil schematic is same for all engines.

Refer also to Service and Installation Instructions Bulletin # 73360 for guidance on fittings & lines.

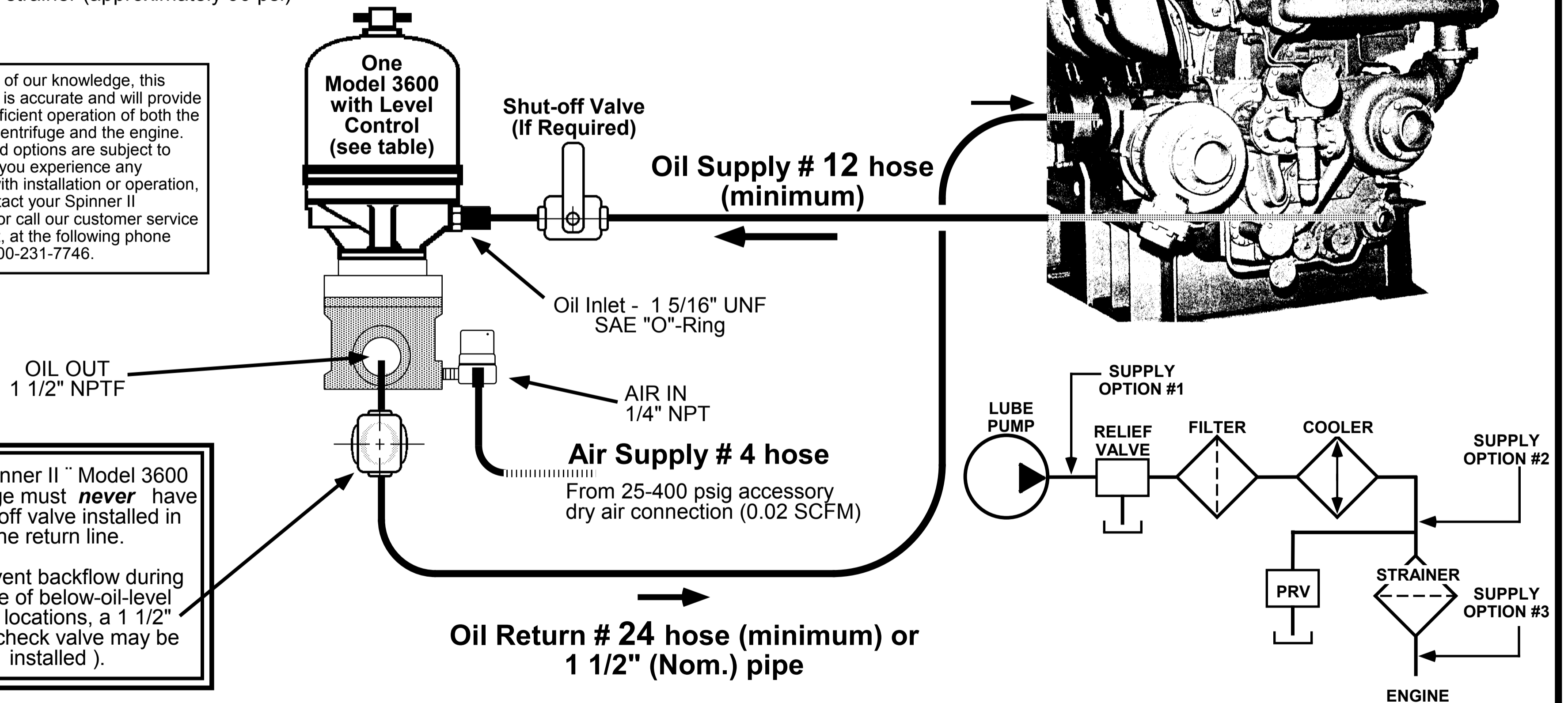
Alco 12 & 16-251F Engines



To the best of our knowledge, this information is accurate and will provide safe and efficient operation of both the Spinner II centrifuge and the engine. Engines and options are subject to change. If you experience any problems with installation or operation, please contact your Spinner II Distributor or call our customer service department, at the following phone number: 800-231-7746.

The Spinner II Model 3600 Centrifuge must *never* have a shut-off valve installed in the return line.

To prevent backflow during service of below-oil-level return locations, a 1 1/2" swing check valve may be installed).



SPINNER II
 © Spinner II Products / T. F. Hudgins, Incorporated
 Houston, Texas 77292-0946

rev	date	change	by
-----	------	--------	----

Spinner II Centrifuge Model 3600 Installation on Alco 251F 12 & 16 Cylinder Engines

drawn SAR	checked	approved	project	date © 1 Jul 1992	dwg A1-4665-0
--------------	---------	----------	---------	----------------------	------------------